



Virtual Obstacle Challenge

Challenge to either be completed Mounted, Unmounted, Driving (long-reins) or using a combination.

The Obstacles;

1. Water Crossing

This can be any body of water wide enough to have all four hooves of pony in water at one time while crossing (examples; dam, creek crossing or puddle.)

To be completed as above across the all three sections.

2. Gate

Any gate will do.

- Mounted: entrant to open gate, ride through and then shut gate on other side, while mounted the whole time.
- Unmounted: entrant to lead pony to gate, open gate, lead pony straight though. On other side entrant to get pony to yield hind end, to perform a 180 degree turn about the forehand before shutting gate.
- Driving: entrant to drive pony parallel to gate, in line to be able to open gate. Back pony to opening and drive through. Shut gate.

3. Jump

Any jumpable obstacle of a minimum height of 45cm.

To be completed as above across the all three sections.

4. Tarp

Any size tarp placed on the ground. Pony to place a minimum of two hooves on tarp at one time.

To be completed as above across the all three sections.

5. Coat

Place a coat on an object (example; a fence post) Pick up coat, carry it for a minimum of 20m and place back down.

- Mounted as above.
- Unmounted and driving: pony to carry coat, please place coat on pony.

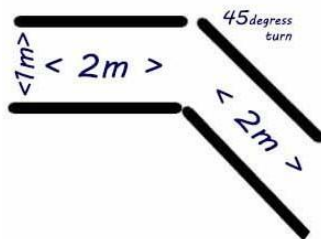
6. Float – to be done dismounted and on lead across all three sections..

Load pony on to a float and then unload.

7. Backing Up

Back pony between poles (or anything of the equivalent to form this obstacle)

Obstacle path to be a maximum of 1m wide, to be a minimum of 4m in distance with a 45 degree angle at the halfway mark. See diagram;



To be completed as above across the all three sections.

8. Billy can

A bucket, of a minimum capacity of 2lts can be used. At least ½ filled with water carried for a minimum of 20m.

- Mounted as above.
- Unmounted and driving: to carry feed buck instead with horses feed inside.

9. Curtain

Walk through an obstacle that has minimal view when looking through.

Obstacle can be items such as streamers, curtains or even thick scrub (bush)

To be completed as above across the all three sections.

10. Stone check – to be done dismounted and on lead across all three sections

Pick up at least one hoof (any hoof) and check for stones using a hoof pick.

11. Tie up – to be done dismounted and on lead across all three sections

Tie pony to a suitable tie off/up object using a correct safety slip knot.

12. Bridge/Tyre platform

In this obstacle you can either cross a bridge of any type or ride/lead/drive your pony onto a step up object and off such as a tyre platform.

13. Tight Squeeze.

Walk through an obstacle that has opening of roughly 1m. (Examples; 2x barrels, 2x trees or a narrow gateway)

To be completed as above across the all three sections.

14. Overhead.

You and your pony will need to travel underneath an obstacle that requires that is roughly the height of the average household door (2m-2.5m) Examples; low hanging branch, overhead gate entrance.

To be completed as above across the all three sections.

15. The Steep Incline

Travel up and then back down a steep incline. Must be of a 45 degree, or more, incline. Can be of any length (from pony being able to jump up and down or pony having to climb up or down).

To be completed as above across the all three sections.

Juniors may be assisted by an adult whenever necessary.

All obstacles are to be recorded while completing.

Obstacles do not have to be done at the same location or on the same day.

Please record a minimum of 10m of the approach and exit of each obstacle.

One can either load a finished edited video clip at completion of challenge or separate videos of each obstacle as completing to the fb group made especially for this challenge.

Each competitor will be given an individual hash tag to use when uploading,
please use this hash tag to make your
Video clips easier to find.